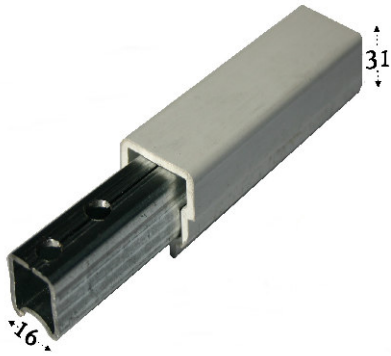


150A & 400A Safebar



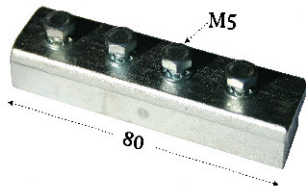
Safebar 150 Series Conductor Bar

Standard lengths of 5m

Weight: (150A): 4.10g / 5m
(400A): 4.55Kg / 5m

Shroud: PVC UV stabilized

Conductor: Galvanized steel / Copper



Safebar 150 Series Joint

Material: Galvanized 12mm BMS

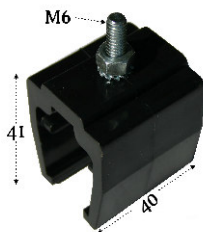
Weight: 150g



Safebar 150 Series Joint Cover

Material: ABS

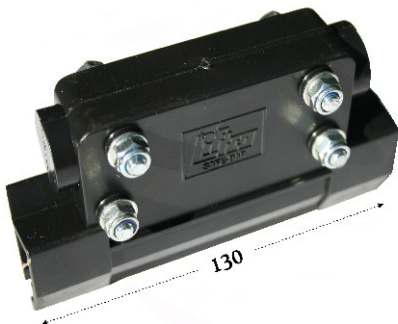
Weight: 50g



Safebar 150 Series Single Hanger Clamp

Material: ABS

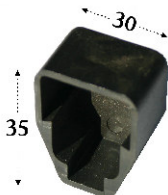
Weight: 30g



Safebar 150 Series Power Feed Cover

Material: ABS

Weight: 80g



Safebar 150 Series End Cap

Material: ABS

Weight: 10g